

# Apartment for Sale in Desenzano del Garda

## Desenzano del Garda

**€ 595.000**

**Ref. CBI119-1337-766**



### **105 sq.m | Bathrooms: 2 | Bedrooms: 2 | Rooms: 3**

For sale in Desenzano del Garda, in one of the city's most renowned and prestigious areas, in an elegant and prestigious 20-unit complex served by an elevator, we offer two wonderful three-room apartments featuring a living area of over 30 m<sup>2</sup> with access to a livable loggia.

The properties are located on the first floor, accessible by elevator, and are spread over a single level.

The sleeping area consists of two double bedrooms, both with en suite bathrooms, and a walk-in closet in the master bedroom.

The elevator leads directly to the communal terrace where there is a rooftop swimming pool overlooking the lake.

Possibility of purchasing a parking space and/or garage in the basement.

Coldwell Banker Real Estate is located in the historic heart of Desenzano del Garda, at Piazza Malvezzi 23, just steps from the old port. Our office perfectly embodies our philosophy: hospitality, elegance, and professionalism, in a place where supply and demand for exclusive properties meet. We specialize in selecting and promoting prestigious properties, offering a personalized, attentive, and confidential service, able to meet every need in the luxury real estate sector.

### **Certification**



Energy Class: A4

## Property Informations

**Address:** PIAZZA MALVEZZI, 23

**Zip Code:** 25015

**Bedrooms:** 2

**Bathrooms:** 2

**Rooms:** 3

**State of Preservation:** Excellent

**Level:** 1

**Total Floor:** 1

**Lift:** Yes

**No Barriers:** Yes

**Age Construction:** 2026

**Balconies:** Present, 16 sq.m

**Kitchen:** Exposed Kitchen

## Features

Tv Antenna: Condominium

Closet

Wiring: By Law

Sanitary Suspended

Jacuzzi

Shower

Pool

Panoramic view

## Nearby

Gyms

Spa

Football Fields

Fitness Centers

Tennis Courts

Bike Lanes

Playgrounds

Railway Station

Public Transport

Kindergarten

Elementary Schools

Schools

High Schools

Cafe

Post Offices

Shopping Centers

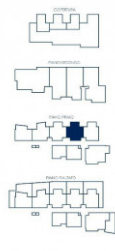
Municipal Offices





**ALLOGGIO 12**

superficie commerciale: 133.41 mq  
 alloggio: 93.80 mq x 100% = 93.80 mq  
 loggia: 19.10 mq x 50% = 9.55 mq



PIANO PRIMO  
 SCALA 1:500



PIANO SVILUPPATO  
 SCALA 1:200